

## Filter-media and spare parts

for your Filterplant out of one hand



### **The experience**

Since 1922 we have been one of the world's largest filter-media manufacturers.

Optimum degree of separation and long lifespans, a constant preparedness to supply, as well as our worldwide 'just in time' service and our process know-how, guarantee the right filter medium.

Tailor-made manufacture of filter-media and special textile constructions of approx. 30m m2 of manufactured filter surface area for plant equipment and process technology, guarantee you a constant, high filter-media quality from IFM.

This know-how is reflected in the development of our own filter-media, as the technical specification is fine-tuned to cleaning with Coanda annular ring injectors.

Through minimal energy consumption we ensure economic filtration.

### **Filter-media service**

- Assistance through consultation, measurements and continual customer-care.
- Disposal options, recycling of used filter-media whilst adhering to current legislation.
- Development of accessories and professional services in filter technology.
- Maintenance contracts, inspections and erections.
- 365 days service for the customer year after year.
- Woven filter-media and needle-felts, non-wovens for cartridges.
- Special filter-media at your disposal for hot-gas filtration.
- Over 40 representatives and licensees on all continents.



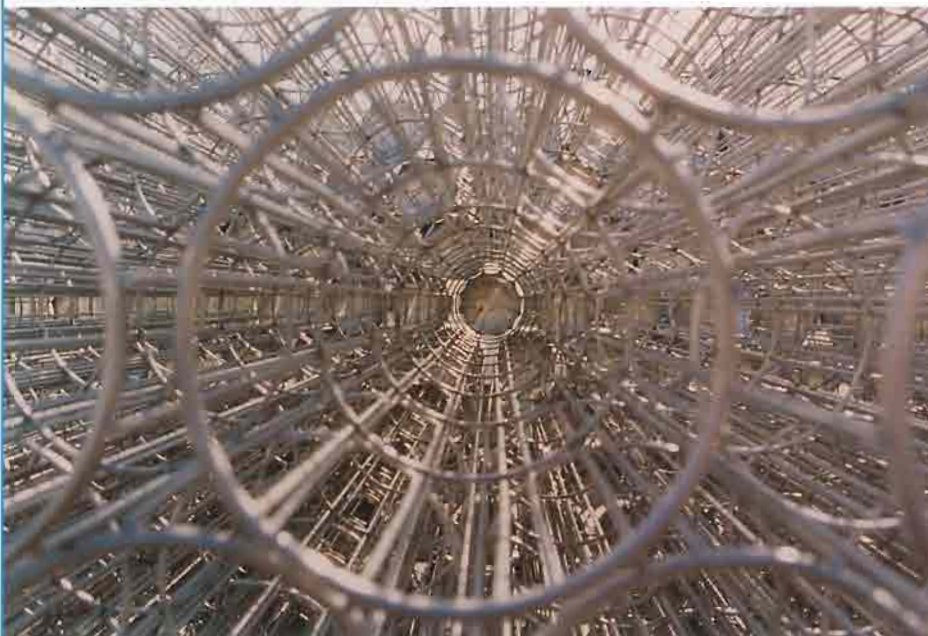
Fan in action in the sugar industry.



Filter-bags ready for dispatch ex-works to the customer.



Balustrade and structural steelwork.



Compressed-air aggregates.



Dust discharge screw.

**Mighty solutions** for tiny particles

## Customer service

### Erection

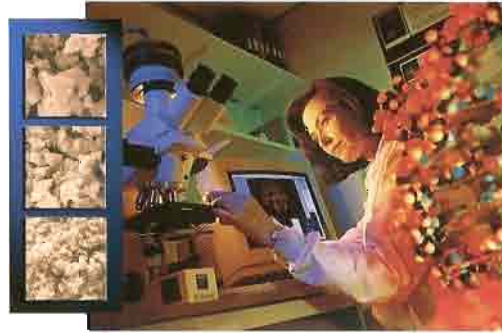
- Service/maintenance work.
- Building work/Build management/Repairs.
- Works monitoring/inspections.
- Filter-bag changing.
- Renewal of plant parts/Erection of other marques.

### Commissioning

- Performance measurements on plants.
- Filter-density spraying.
- Electronic control conversion, installation of control devices.
- Performance measurements of filter units, both Intensiv and other marques.
- Assessment/salvage reports.
- Fan balancing.
- Data gathering for design documents.
- Commissioning of converted plants.

### Spare-parts and filter-bags

- Supply of spare-parts for our own units and those of other marques (partial).
- Supply of filter-media for our own units and those of other marques (partial).
- Supply of components (bulk material technology, conveying technology and trade goods).
- Production/amendment of documentation.



Particle-size analyses Examination of filter-media.



Air-permeability measuring device.



Filter-media laboratory

Arrangement of the tubes in the filter.



Samples in laboratory oven.

### Production Range

- Jet-bags
- Flat filters
- Ceramic cups
- Filter blades
- Cassettes
- Cartridges
- Filter pockets
- Special constructions





## Filter-media production

Intensiv filter-bags are produced exclusively in our own facility. This guarantees our customers:

- optimal filter-media selection.
- professional fabrication.
- correct fitting.

Reliable quality control according to DIN EN ISO 9001:2000 is our maxim.

## Areas of application

Filter-media from Langenberg have their customers in these sectors:

- cement industry.
- rock products industry.
- chemical industry.
- iron and steel industry.
- foodstuffs industry.
- Dairy industry.
- Glass industry.
- Energy industry.



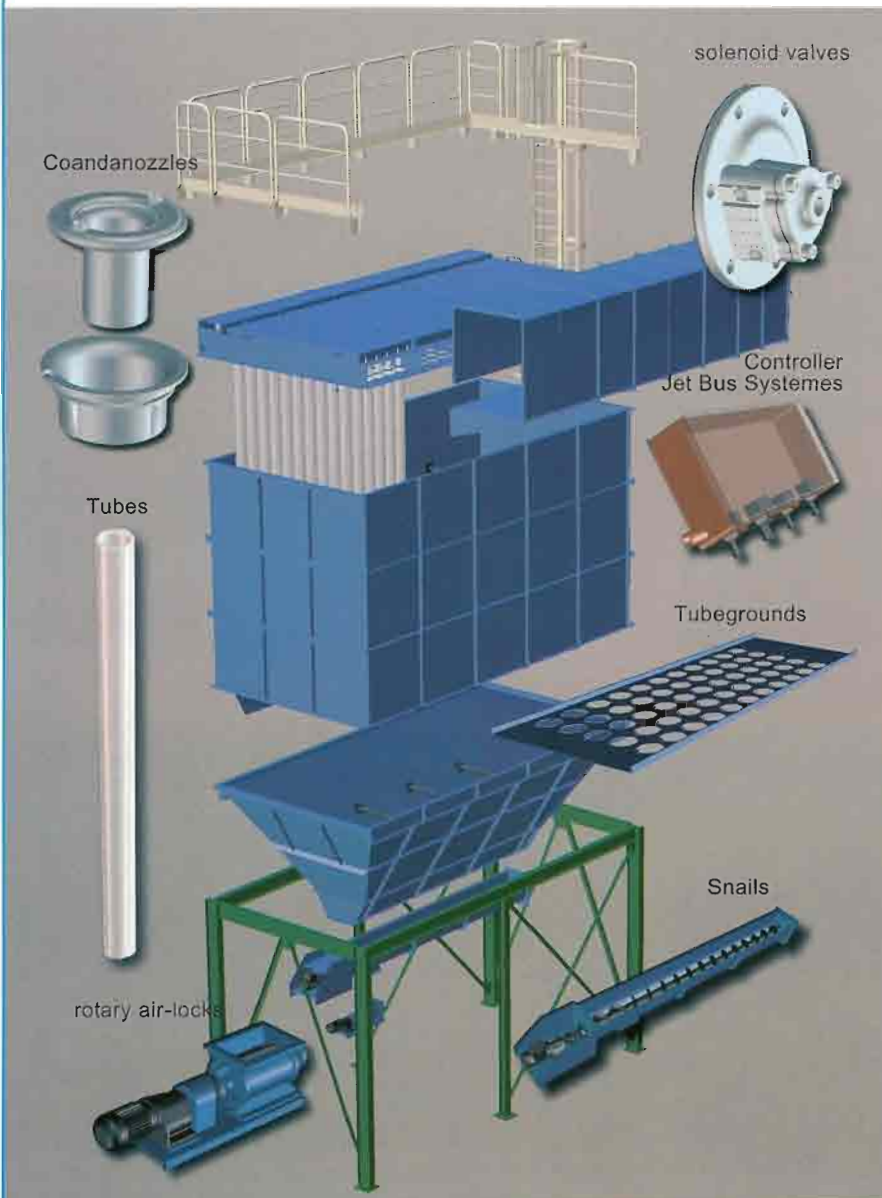
Faserart	Kurzzeichen u. Markenname	Gewicht G = Gewebe V = Nadelfilz	Luftdurchlässigkeit nach DIN 53 887	Temperaturbeständigkeit
Fibre type	Symbol	Weight	Air permeability	Temperature resistance
Nature de la Fibre	Abbréviation	Poids	Perméabilité à l'air	Résistance à la température
	G = fabric, tissu V = felt, feutre	in g/m <sup>2</sup>	in l / dm <sup>3</sup> min bei 200 Pa	in °C
Baumwolle	B	G 250 - 440	60 - 200	75 - 85
Polypropylen	PP	G 320	120	80 - 90
	"Meraklon" ®	V 450 - 600	150 - 300	80 - 90
Polyacrylnitril	PAN	G 250 - 440	80 - 300	125 - 135
	"Dolanit" ®	V 440 - 550	60 - 370	105 - 115
	"Rolan" ®			
Polyester	PE	G 330 - 700	15 - 250	130 - 140
	"Trevira" ®	V 450 - 600	60 - 350	130 - 140
Polyester / Polyacrylnitril aromatisches	PEA	V 460 - 600	60 - 300	125 - 135
Polyamid	NX	G 280 - 380	100 - 300	180 - 200
	"Nemex" ®	V 300 - 550	50 - 300	180 - 200
Polyphenylen - Sulfid	PFS, RY	V 500 - 800	60 - 250	170 - 190
	"Ryton" ®			
Polyimid	PI	V 500 - 800	60 - 250	200 - 240
	"F-B4" ®			
Polytetrafluor-ethylene	PTFE, TF	G 260 - 350	80 - 200	200 - 240
	"Teflon" ®	V 700 - 1200	80 - 150	200 - 240
Glas	GI	G 250 - 600	80 - 200	220 - 260
		V 800 - 1000	80 - 150	200 - 240
Keramikerzen	HTK	2000 - 4000	60 - 100	240 - 500
Zellulosevlies	NC - 190	180 - 250	120 - 500	80
Polyestervlies	PE - 150	180 - 250	180	100

Die genannten Markennamen sind eingetragene Warenzeichen der jeweiligen Herstellerfirmen.

# Intensiv-Filter Technologie.

## Spare parts and services

- Erection and commissioning of gas-scrubbing units, maintenance and repairs.
- Preparation of insurance damage claims.
- Filter-media examination.
- Particle-size analysis of dusty and pulverulent products / laboratory services.
- Personnel training, staging of seminars.
- Recording of operating data, drawing up of assessments.
- Short-notice spare-part supplies.
- Measurements of noise and emissions.
- Optimisation of dedusting plants.
- Modernisation of filter-plants.
- Problem-analyses in dedusting and gas-scrubbing plants.
- Pilot plants.



Filterbasket and Intermediate rings.



Erection and commissioning, service and repair of gas-scrubbing plants.



Assessment of insurance damage.



Personnel training and seminars at our offices.



In-house pilot-plant for our products.



Solutions on-site. Wherever you want. 0800 3338784



Intensiv-Filter GmbH&Co KG (Germany)  
 DE-42555 Velbert-Langenberg Voßkuhlstraße 63  
 ☎: 0049(0)2052/910-0 📠: 0049(0)2052/910-248  
 www.intensiv-filter.de if@intensiv-filter.de

Technische Änderungen vorbehalten  
 06/05 -1000 FD